



# Protective Safety Collar

User Manual

# Table of Contents

<b>1. About This Manual.....</b>	<b>01</b>
<b>2. Product Description .....</b>	<b>02</b>
<b>3. Specifications.....</b>	<b>03</b>
<b>4. In the Box .....</b>	<b>03</b>
<b>5. Safety.....</b>	<b>04</b>
<b>6. Installation Guide .....</b>	<b>05</b>
6.1 Preparing the Connection Brackets	
6.2 Installing the Safety Collar	
6.3 Securing the Connection Brackets	
<b>7. Maintenance .....</b>	<b>10</b>
<b>8. Warranty .....</b>	<b>11</b>

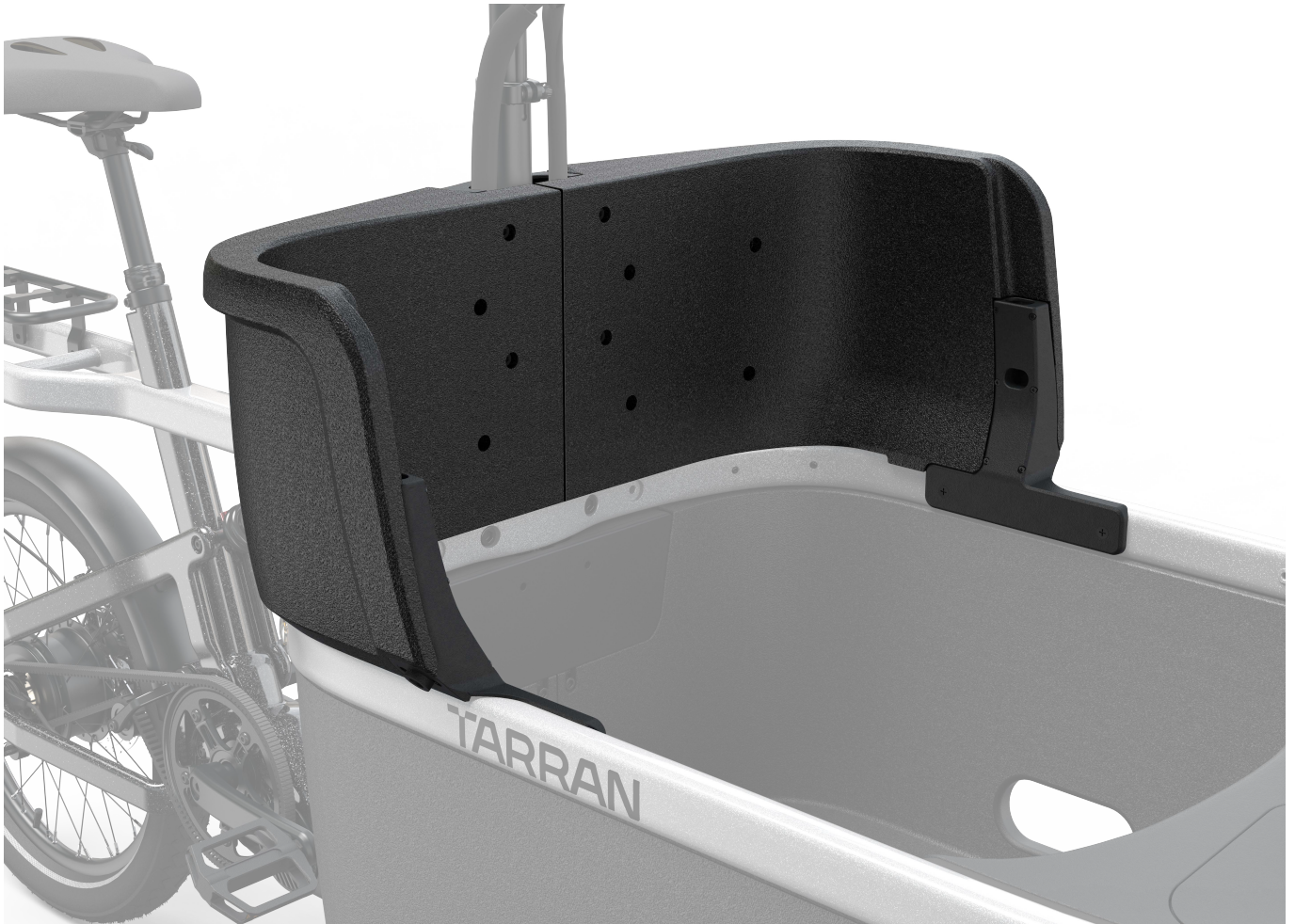
# 1. About This Manual

---

This manual contains important information on safely installing and using the Protective Safety Collar for your T1 Pro. Read and understand all instructions before installation.

## 2. Product Description

---



The Protective Safety Collar provides enhanced safety for children in the cargo box by creating a protective barrier that prevents overextension during tilts and turns. The collar features integrated storage pockets and a quick-detach design.

## 3. Specifications

---

- Material: High-strength EPP with nylon inserts
- Dimensions: 730 mm × 330 mm × 255 mm
- Weight: 2 kg
- Compatible with: TARRAN T1 Pro

## 4. In the Box

---



- 2 × Protective Safety Collar Pieces
- 4 × M6×16 Cap Head Screw
- 4 × M6×20 Socket Head Cap Screw
- 1 × 3mm Hex Key
- 1 × 4mm Hex Key
- 1 × 5mm Hex Key
- 1 × Philips Screwdriver
- 2 sets × Connection Bracket System
- 1 × Handlebar Bracket

Connection Bracket System	Quantity	Description
Connection Bracket Arm (Left / Right)	2	The main structural piece that inserts into the Safety Collar. The flat plate sits flush against the collar wall and includes mounting points for screws.
Locking Plate	2	The U-shaped insert that slots into the bracket's channel and holds the bracket inside the Safety Collar. It prevents the bracket from pulling out during use.
M5×8 Cap Head Screw	4	Used to fasten the Locking Plate to the bracket and the bracket to the collar.

## 5. Safety

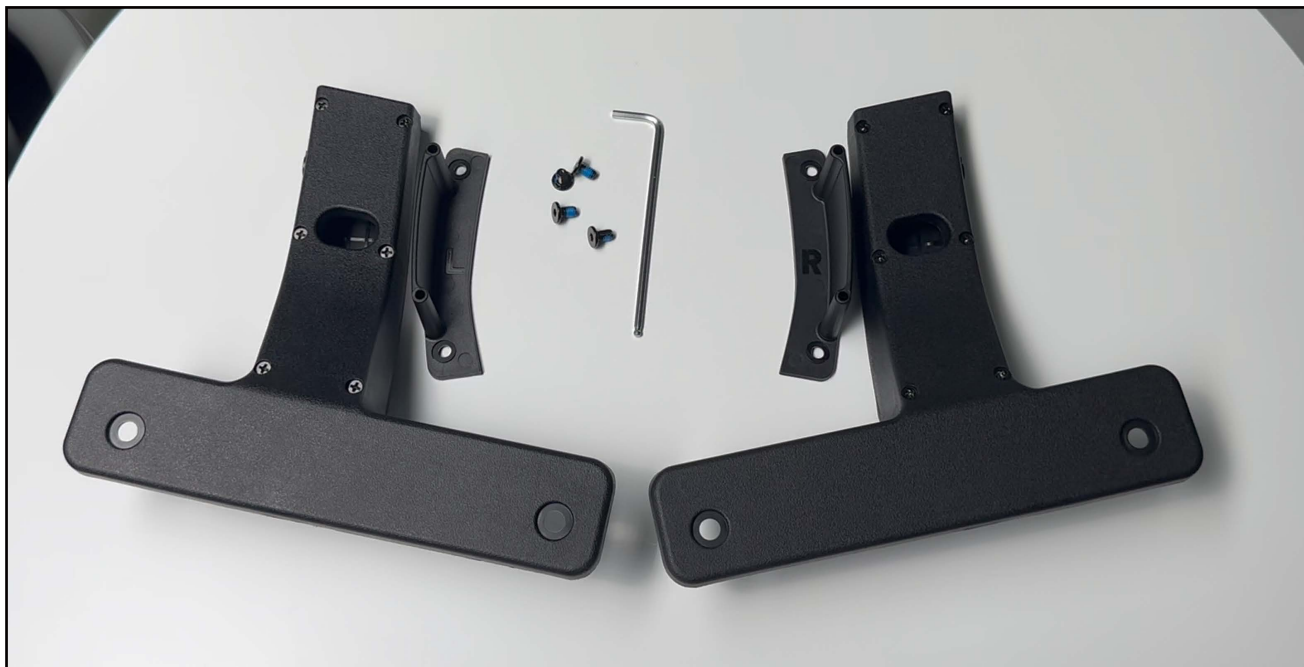
### Warning!

- The Protective Safety Collar is designed to enhance safety but does not replace the need for proper child restraints. Always secure children using the TARRAN Child Seat with 5-point safety harness.
- Regularly inspect the Protective Safety Collar for damage. If any parts are cracked or deformed, replace immediately.
- Always ensure the collar is properly installed before transporting children.

# 6. Installation Guide

---

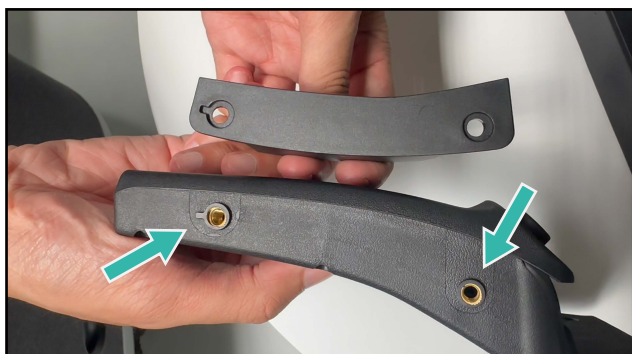
## 6.1 Preparing the Connection Brackets



1. Identify the left and right connection brackets. Each bracket is designed to fit only on its corresponding side.

2. For each bracket:

- Align the Locking Plate and the Connection Bracket Arm. The Locking Plate should fit into the channel of the Bracket Arm with components positioned parallel.
- Insert the 2 M5 screws on each Arm and tighten.
- Ensure the brackets are aligned, with components parallel.



3. Repeat for the second bracket assembly.



The brackets will only fit correctly in one orientation. The integrated bump and ring around the screw hole ensure proper alignment.

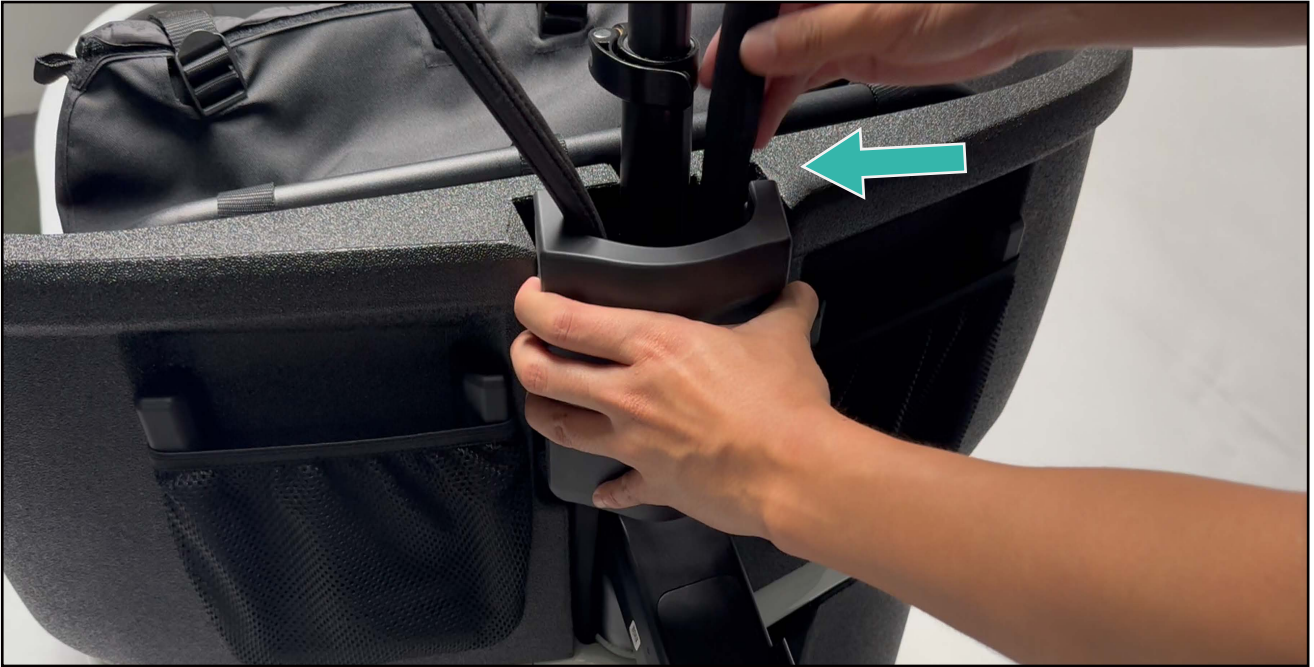
## 6.2 Installing the Safety Collar

1. Position the Safety Collar pieces around the cargo box. The collar should form a complete unit that fits snugly around the handlebar and cargo box rim.



---

2. Align all wire guides so they fit straight into the designated channels.



3. Install the Handlebar Bracket, ensuring all wires are covered.

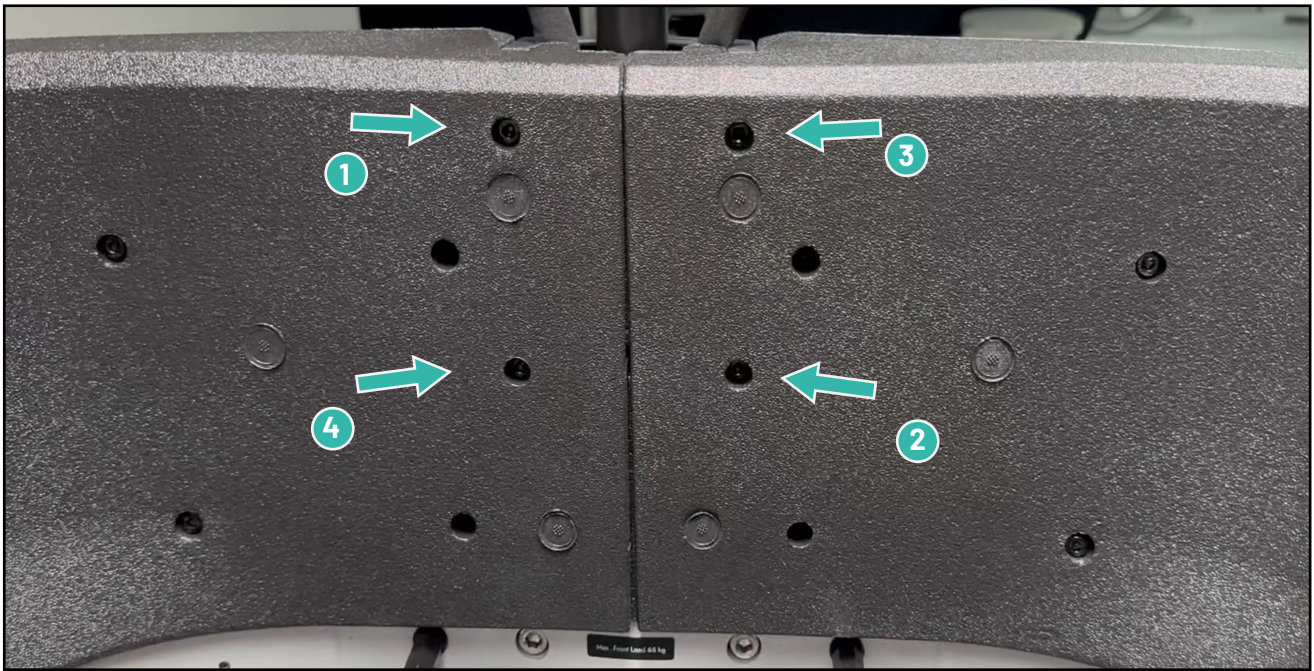


---

4. Using the four provided M6×20 socket head cap screws, secure the collar to the cargo box.

For optimal installation:

- Install screws in a diagonal pattern
- Tighten the first screw partially
- Install the diagonally opposite screw next
- Repeat for the remaining two screws
- Fully tighten all screws to 2 Nm



---

## 6.3 Securing the Connection Brackets



1. Take the assembled left connection bracket and slide it into the corresponding slot on the left side of the Safety Collar until you feel it lock in place.
2. Repeat with the remaining connection bracket on the other side.
3. Secure each bracket to the collar using the provided M6×16 cap screws. Tighten to 1.5 Nm.
4. Check that all components are securely fastened by gently pulling on the collar.

# 7. Maintenance

---

- Regularly check that all screws are properly tightened.
- Clean the Safety Collar with a soft, damp cloth. For stubborn dirt, use mild soap and water.
- Do not use abrasive cleaners or solvents, as these may damage the materials.
- Inspect the collar before each use for any signs of damage or wear.

# 8. Warranty

---

TARRAN provides a limited warranty for the Protective Safety Collar. For complete warranty information, terms, and conditions, please visit our warranty policy page at:

<https://tarranbikes.com/pages/warranty-policy>

The warranty covers manufacturing defects in materials and workmanship under normal use. It does not cover damage from misuse, accidents, improper installation, or normal wear and tear.

For more information or if you have questions, please contact your authorized TARRAN dealer or visit

[www.tarranbikes.com](http://www.tarranbikes.com).