



MIK HD

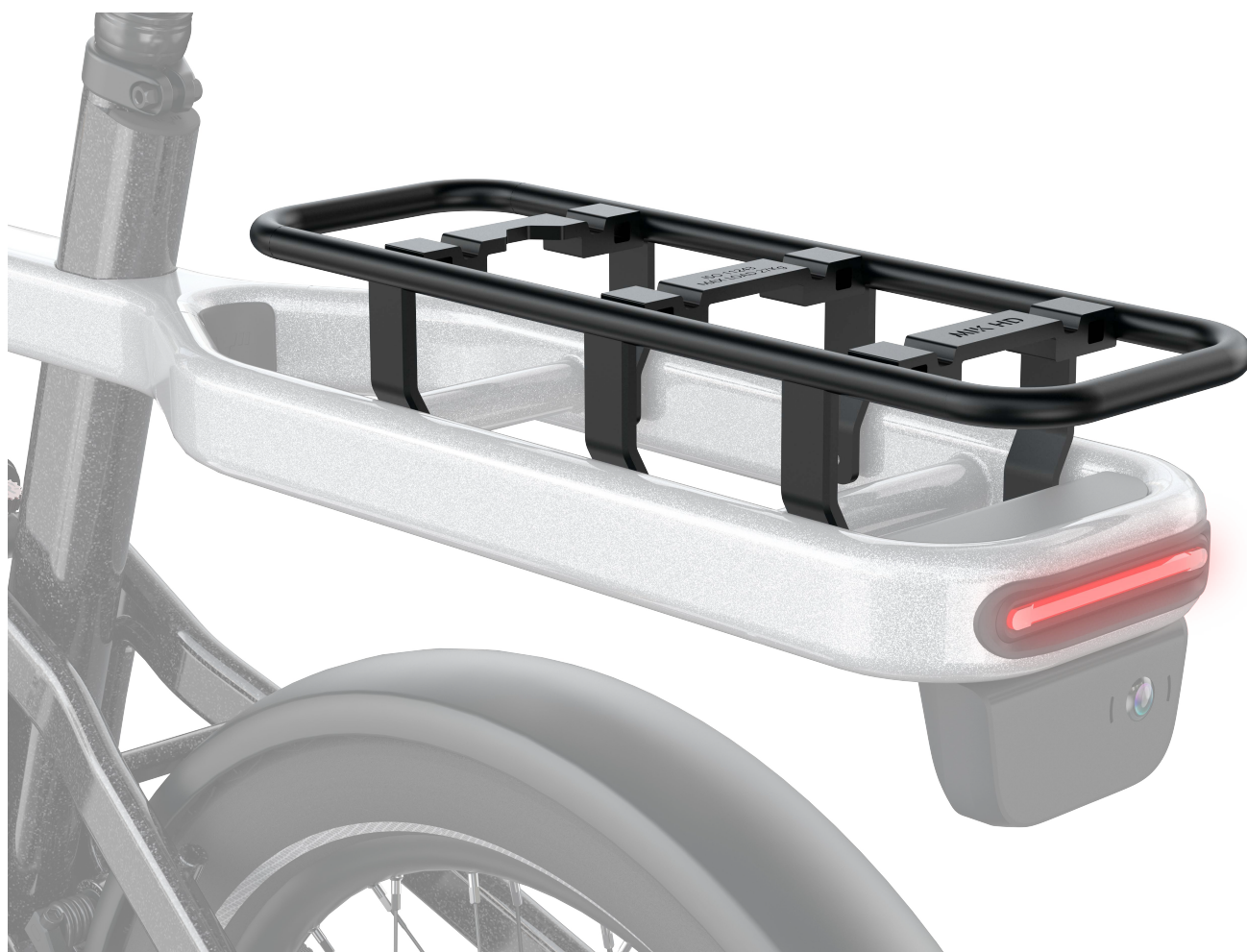
Cargo Rack

User Manual

Table of Contents

1. Product Description.....	01
2. Safety Information	02
3. In the Box	03
4. Installation.....	04
5. Maintenance.....	05
6. Warranty	05

1. Product Description



The MIK (Mounting Is Key) system provides a secure and versatile mounting platform for attaching various accessories to your T1 Pro's luggage carrier. This manual describes how to properly install the MIK adapter plate.

2. Safety Information

2.1 General Safety

- Read all instructions carefully before beginning installation.
- Ensure the bike is stable and in kickstand mode during installation.
- Check that the MIK system is securely fastened before each ride.
- Do not exceed the maximum load capacity of 27 kg (60 lb).

2.2 Warnings

- Improperly installed MIK systems may detach during riding, causing accidents or injury.
- Always verify all screws are properly tightened to the recommended torque values.
- Do not modify any components of the MIK system.

3. In the Box



- 1 × 1 × MIK HD Cargo Rack
- 4 × M5 mounting screws
- 1 × Allen key (M5, 4 mm)

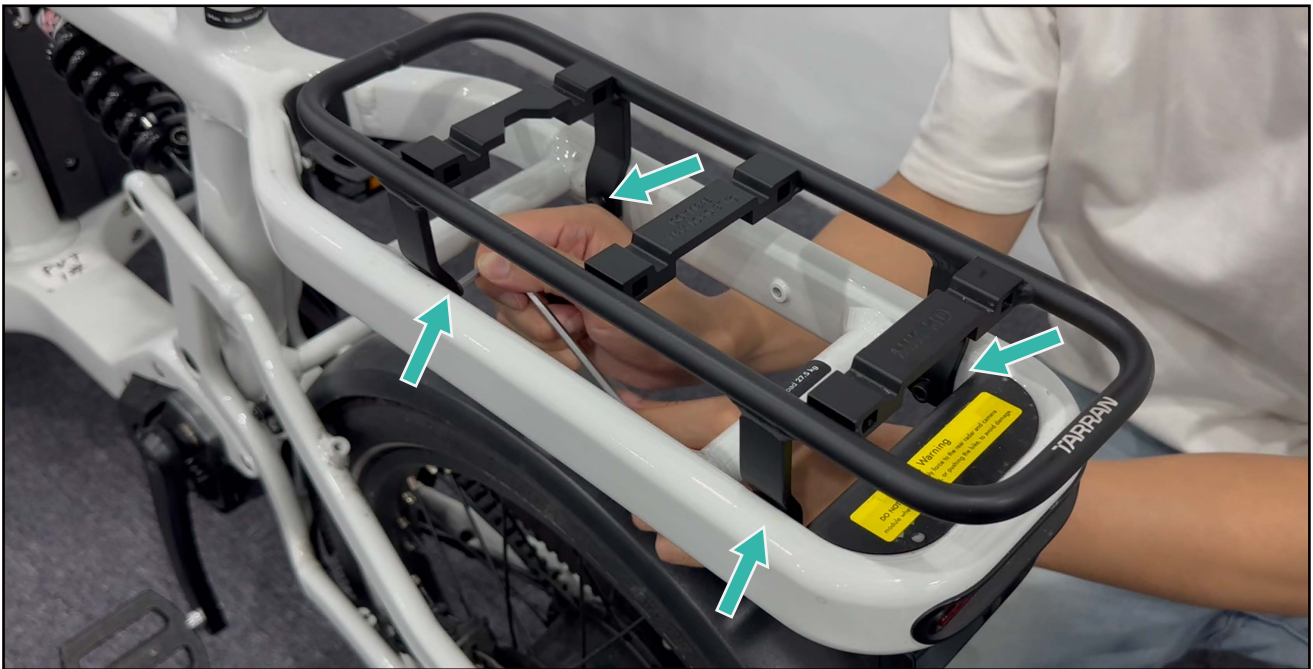
4. Installation

4.1 Preparing for Installation

1. Power off your T1 Pro and ensure it is in kickstand mode.
2. Clean the luggage carrier surface where the MIK HD Cargo Rack will be mounted.

4.2 Mounting the MIK HD Cargo Rack

1. Position the MIK HD Cargo Rack on the luggage carrier, aligning the screw holes with the mounting points.
2. Insert the four M5 mounting screws through the MIK adapter plate into the mounting points.
3. Using the 5 mm Allen key, tighten each screw to 4-5 Nm.
4. Verify that the MIK adapter is firmly secured to the luggage carrier.



4.3 Testing the Installation

1. Check that the MIK HD Cargo Rack does not move or wobble when pressure is applied.
2. Attempt to attach a compatible MIK accessory to ensure proper functionality.

5. Maintenance

- Regularly check that all screws remain properly tightened.
- Clean the MIK HD Cargo Rack with a damp cloth when necessary.
- Inspect the MIK HD Cargo Rack for signs of wear or damage before each use.

6. Warranty

TARRAN provides a limited warranty for the MIK HD Cargo Rack. For complete warranty information, terms, and conditions, please visit our warranty policy page at:

<https://tarranbikes.com/pages/warranty-policy>

The warranty covers manufacturing defects in materials and workmanship under normal use. It does not cover damage from misuse, accidents, improper installation, or normal wear and tear.

For more information or if you have questions, please contact your authorized TARRAN dealer or visit

www.tarranbikes.com.