



Battery

User Manual

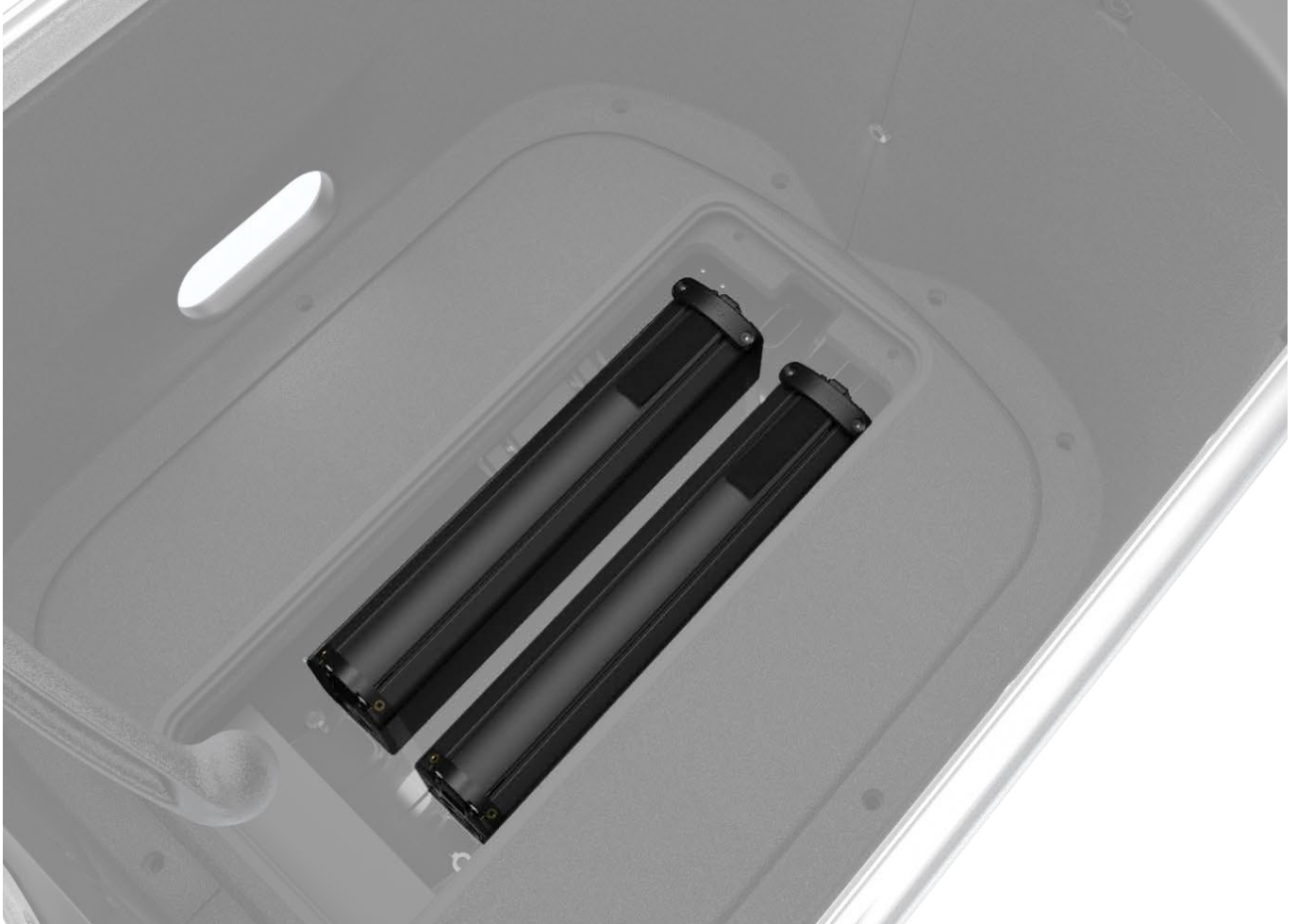
Table of Contents

1. About This Manual.....	01
2. Product Description	02
3. Specifications.....	03
4. In the Box	04
5. Safety.....	05
6. Usage Guide.....	06
6.1 Checking	
6.2 Installing	
6.3 Removing	
6.4 Charging	
7. Storage.....	10
8. Warranty	11

1. About This Manual

This manual provides important information about the T1 Pro Battery, including SPECS, safety notices, usage guidelines, and maintenance procedures. Please read this manual carefully before installing or using the Battery and keep it for future reference.

2. Product Description



The T1 Pro long-range Battery offers a 19.2Ah capacity and 708Wh energy, powering up to 100km range*. It charges to 80% in 2.6 hours and 100% in 4 hours, and is IP67 waterproof for worry-free riding in all weather. With dual-battery support, T1 Pro helps double your range for longer journeys.

3. Specifications

Battery

Material	Lithium Battery
Dimensions	368mm*64mm*94mm
Net Weight, approx.	3.82 kg
Compatible with	TARRAN T1 Pro
Nominal capacity	19.2Ah
Nominal energy	708Wh
Charging voltage & current	36V/6A
Operating temperature	-20 to 55 C
Charging temperature	0 to 45 C
Recommend charging temperature	10 to 45 C
Storage temperature (≤ one month)	-20 to 55 C
Storage temperature (≤ three months)	-20 to 45 C
Storage temperature (≤ one year)	-20 to 25 C
Waterproof level	IP67
Charging time: from 0% to 80%	2.6 hours per battery
Charging time: from 0% to 100%	4 hours per battery

4. In the Box



- 1× Battery × 1

5. Safety

Lithium-ion battery cells are highly flammable and may become explosive under specific conditions. To avoid the risk of battery explosion, ensure the battery is stored, operated, and charged correctly in accordance with the provided guidelines.

Warning!

- Keep the battery out of reach of children.
- Protect the battery from heat (e.g. continued exposure to sunlight), open flames, and immersion in water. Do not store, operate, or charge the battery near hot or flammable objects, as this leads to the risk of explosion.
- Do not place the charger and the battery near flammable objects. Only charge the battery when it is in a clean, dry environment, and away from potential fire hazards. There is a risk of fire due to the heating that occurs during charging.
- Keep the battery and charger away from strong oxidizing agents and corrosive substances.
- Avoid subjecting the battery to mechanical stress, shocks, or high temperatures. Such conditions may damage the battery and result in the release of flammable substances.
- Keep the battery away from paper clips, coins, keys, nails, or screws that could short-circuit the contacts. A short circuit between the battery contacts may cause burns or fire.
- Never submerge the battery in water or clean the battery using high-pressure water jets, as doing so poses a risk of the battery short-circuiting, which could pose a fire hazard.
- Place the battery only on clean surfaces. In particular, avoid contaminating the charging socket and contact with sand, dirt, or other debris. This creates a risk of the battery short-circuiting, which may pose a fire hazard.
- Do not attempt to open or modify the battery yourself. This could result in the risk of the battery short-circuiting.
- Never charge or use a damaged battery. If the battery is damaged, contact your dealer immediately.
- The battery may emit vapors if it is used incorrectly or damaged. Provide a fresh air supply and seek medical attention in the event of pain or discomfort. These vapors can irritate the respiratory system.
- Incorrect use of the battery may cause liquid leakage. Avoid contact with this liquid. If accidental contact occurs, rinse the affected area with water. Seek medical attention immediately if the liquid comes into contact with eyes. Leakage from the battery may cause skin irritations or burns.
- Only use original or authorized batteries approved by an authorized TARRAN dealer. Using non-approved or third-party batteries may lead to short-circuiting, overheating, injuries, or fire hazards.
- Ensure the battery is used exclusively with the matching original mid-motor to prevent dangerous overloading.
- Never leave the battery unattended while charging.
- Do not use the battery as a handgrip. Lifting your bike by means of the battery may damage the battery.
- Never transport the battery on your person! Batteries are classified as a hazardous material and may overheat or ignite under specific conditions.
- Switch off the bike system and remove the battery before performing any maintenance, assembly, or transportation work. Accidental activation of the bike system poses a risk of injury.

6. Usage Guide

T1 Pro supports using two batteries to provide a longer ride range. Using two batteries is also helpful in extending the lifespan of the batteries by reducing the usage rate.

6.1 Checking

There are two methods to check the state of charge.

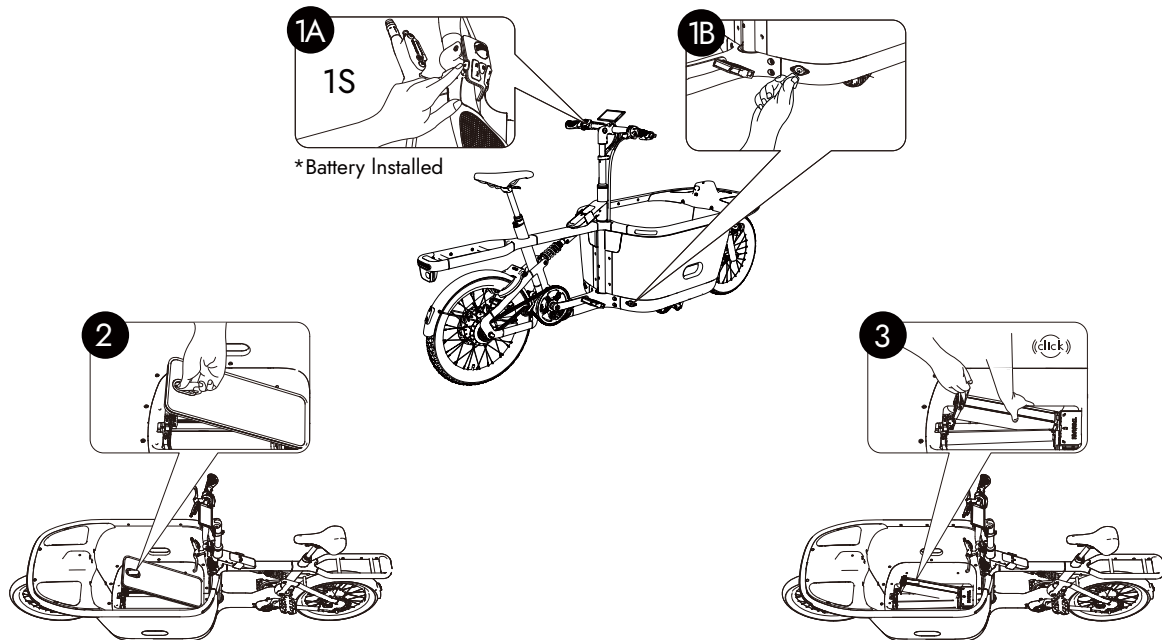
Method 1 – on the battery: press the button near the charging port on the battery. Different LED indicator states signify different conditions.

LED Status Indicators on the Battery

SOC	LED1 (red)	LED2 (green)	LED3 (green)	LED4 (green)	LED5 (green)
0% to 10%	Flashing	OFF	OFF	OFF	OFF
11% to 30%	ON	OFF	OFF	OFF	OFF
31% to 50%	ON	ON	OFF	OFF	OFF
51% to 70%	ON	ON	ON	OFF	OFF
71% to 90%	ON	ON	ON	ON	OFF
91% to 100%	ON	ON	ON	ON	ON

Method 2 – on the central display: switch on the bike and check the state of charge on the central display. Tap the battery icon. The data indicates the SOC of the battery or the total remaining assist ride range(km); this value will change depending on the selected assist level. To switch the format in which data is displayed, click the battery icon on the central display.

6.2 Installing



To install the battery, first unlock the battery box lid. There are two ways to do this:

If the battery is not installed:

- Use the battery box key to unlock the lid

If the battery is installed and the bike is switched on:

- Press and hold the battery box lock button for one second to unlock the lid

For first-time installation, we recommend using the battery box key to unlock the battery box lid.

Below are the detailed instructions:

1. Retrieve the key from the toolbox.
2. Insert the key into the battery box lock and unlock the battery box lid.
3. Lift the lid to access the battery cradle.
4. Align the battery's charging port with the charging plug and insert the plug securely.
5. Gently press the opposite end of the battery until you hear a click, confirming it is locked in place.
6. Close the battery box lid.

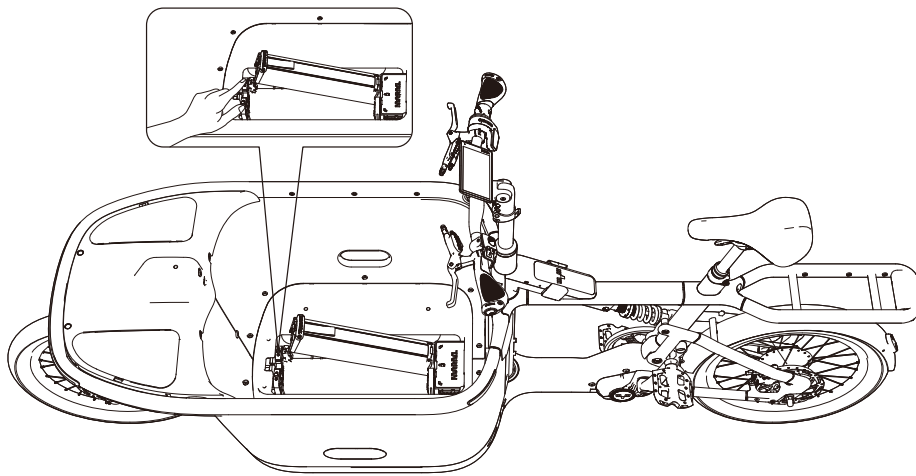
If you have lost your key, please contact Tarran Support for assistance.



Caution: To prevent the battery or the central display from being stolen, ensure the battery box lid is securely closed and cannot be opened when the bike is powered off, especially if you are leaving the bike unattended.

6.3 Removing

Use the battery box key to unlock the lid, or when the bike is powered on, press and hold the battery box lock button on the handlebar control unit or the app for one second to unlock the battery box lid. Lift the lid, press the black release button on the battery cradle, and pull up the battery (Refer to Figure 9). Close the lid again.



6.4 Charging

You can charge the battery whether it is inside or outside the battery box.

Charging Within the Battery Box

1. Install the battery within the battery box
2. Insert the appliance plug into the power cable into the charger.
3. Insert the power plug on the power cable into a working power outlet.
4. Connect the charging plug of the charger to the charging port of the bike

Charging Outside the Battery Box

1. Insert the appliance plug into the power cable into the charger.
2. Insert the power plug into the power cable into a working power outlet.
3. Connect the charging plug of the charger to the charging port of the battery.

Fully charging one battery takes about four hours. The charger and battery LEDs indicate the charging status.

LED Charging Status Indicators on the Battery

SOC	LED1 (red)	LED2 (green)	LED3 (green)	LED4 (green)	LED5 (green)
0% to 20%	Flashing	OFF	OFF	OFF	OFF
21% to 40%	ON	Flashing	OFF	OFF	OFF
41% to 60%	ON	ON	Flashing	OFF	OFF
61% to 80%	ON	ON	ON	Flashing	OFF
81% to 100%	ON	ON	ON	ON	Flashing

LED Status Indicators on the Charger

Solid green	The battery is fully charged, or the charger is not connected.
Solid yellow-green	The charger is charging the battery.
Solid red	The charger is malfunctioning. Please disconnect and reconnect the charger plugs.
Flashing green	No battery present.
Flashing yellow-green	Charger malfunctioning; recovery in progress.
No LEDs lit	The power socket has no power, or the power cable is malfunctioning or not plugged in correctly.

Caution!

- To extend the lifespan of the battery, fully charge it before its first use.
- Only charge the battery with the original charger.
- Keep the charging port on both the battery and the bike dry to prevent damage from water or rain.
- To prevent the battery from being completely discharged, meaning that the bike cannot switch on or switch out of kickstand mode, ensure the battery has enough power before each ride.

7. Storage

If you plan not to use the T1 Pro or the battery for over three months, store the battery in a dry, clean, and well-ventilated place within the permitted temperature range, refer to 3. Specifications. The storage location should ideally be:

- Equipped with smoke detectors.
- Located away from combustible or highly flammable materials.
- Distant from sources of heat.
- Protected from bright sunlight.
- At a temperature between 10°C and 20°C.

Caution!

- Battery storage: If the battery is left fully discharged for an extended period, it may become damaged, even with its low self-discharge rate. This can significantly reduce the battery capacity. It is important to store the battery at a charge level of around 30% to 50% (two LEDs illuminated on the charge status indicator). Check the battery level after six months. If only one LED illuminates, recharge the battery to a level between 30% and 70%.
- Avoid overcharging: Do not leave the battery attached to the charger after the battery is charged to an appropriate level.
- Protect from moisture: Keep the battery dry and protect it from dampness and water. In poor weather conditions, we recommend removing the battery from the bike and storing it in an enclosed space.
- Temperature management: Ensure the battery is stored within the recommended temperature range. For example, avoid leaving the battery in a car during the summer.

8. Warranty

TARRAN provides a limited warranty for the Battery. For complete warranty information, terms, and conditions, please visit our warranty policy page at:

<https://tarranbikes.com/pages/warranty-policy>

The warranty covers manufacturing defects in materials and workmanship under normal use. It does not cover damage from misuse, accidents, improper installation, or normal wear and tear.

For more information or if you have questions, please contact your authorized TARRAN dealer or visit

www.tarranbikes.com.